



MONTHLY MEMBERSHIP PROGRESS REPORT

District 16 N

Results as of: 05/31/2019

GMT: MAHESH CHITNIS

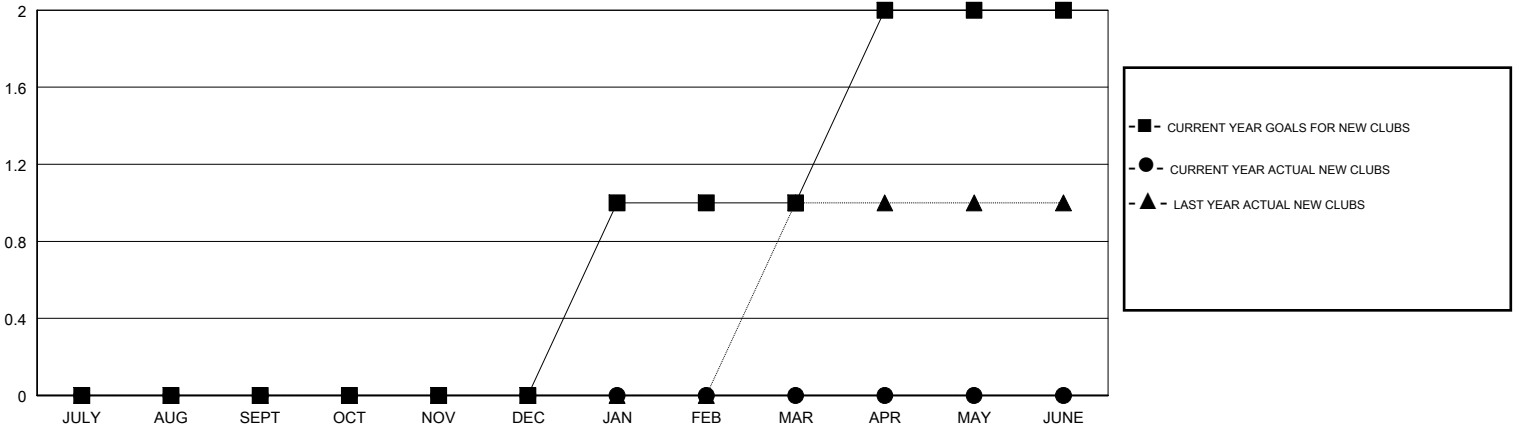
LOCATION NEW JERSEY

GMT CA

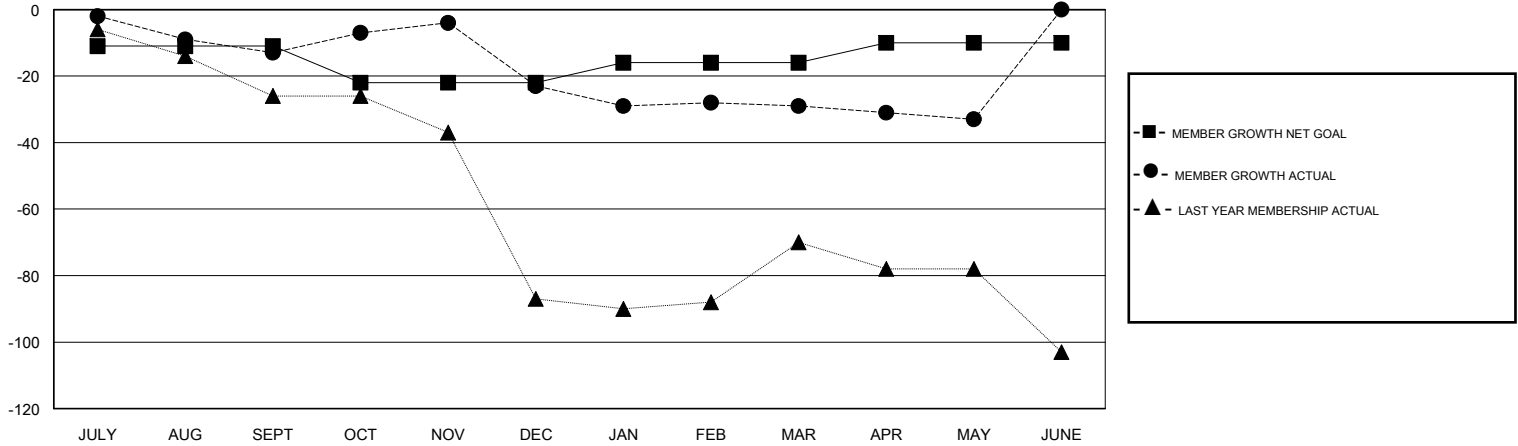
Clubs			
RESULTS FOR 2018-2019			
QUARTER	NEW CLUB GOAL	NEW CLUBS	DROPPED CLUBS
JULY/AUG/SEPT	0	0	0
OCT/NOV/DEC	0	0	0
JAN/FEB/MAR	1	0	0
APR/MAY/JUNE	1	0	0

Members			
RESULTS FOR 2018-2019			
QUARTER	MEMBER GROWTH NET GOAL	MEMBER GROWTH ACTUAL	DROPPED MEMBERS ACTUAL (including transfers)
JULY/AUG/SEPT	-11	24	32
OCT/NOV/DEC	-11	29	37
JAN/FEB/MAR	6	14	20
APR/MAY/JUNE	6	9	13

GOALS AND ACTUAL NEW CLUBS CUMULATIVE



GOALS AND ACTUAL MEMBERS CUMULATIVE



DROPPED CLUBS: 0	27 CLUBS OF 59 ADDED 1 OR MORE NEW MEMBERS	<u>GENDER DISTRIBUTION</u>	
DROPPED MEMBERS		MALE	1,020 (72.14%)
DECEASED	18	FEMALE	394 (27.86%)
CLUB CANCELLED	0	Women Percentage Fiscal Year Goal: 35%	
OTHER	84	TOTAL FAMILY UNIT MEMBERS	220
TOTAL	102	FAMILY MEMBERS PAYING HALF DUES	114

[CLICK HERE FOR CUMULATIVE MEMBERSHIP DATA](#)